

# Marlette<sup>®</sup>

PENNSYLVANIA



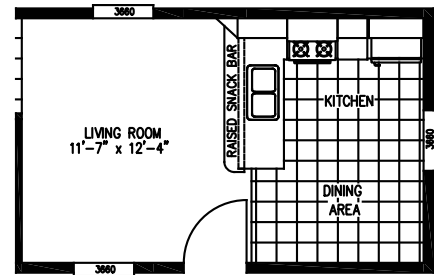
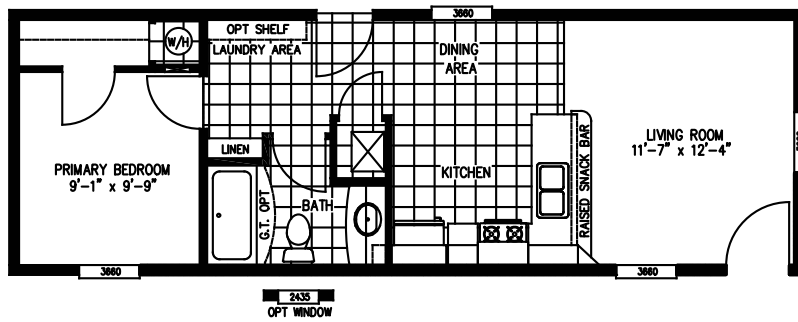
LEWISTOWN



# INDEX

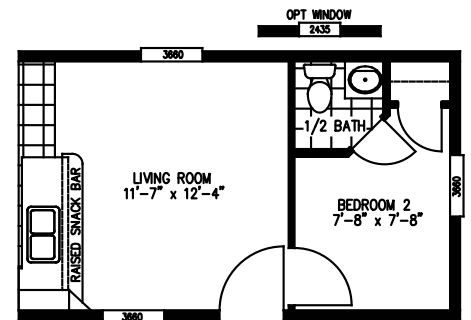
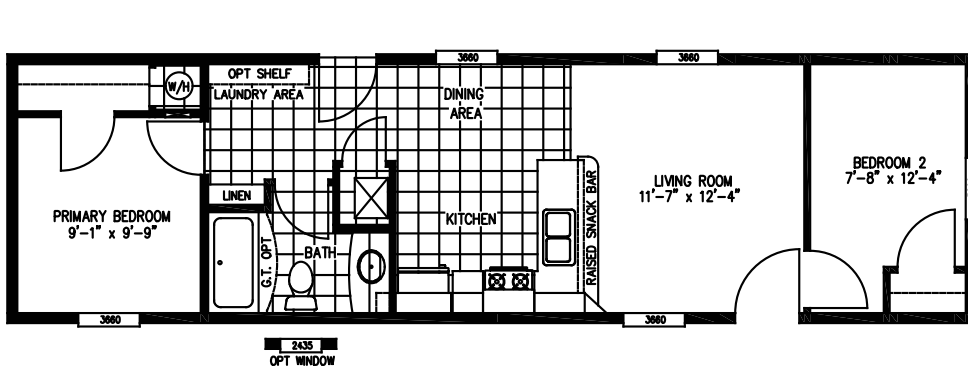
CLA ID#	MODEL NAME	box size	sq. ft.	bed	bath	page
4414-40	<b>ROTHROCK 40</b>	14 X 40	533	1	1	3
4414-40	<b>ROTHROCK 48</b>	14 X 48	640	2	1	3
7014-660	<b>ALLEGHENY</b>	14 X 66	880	3	2	4
5616-706	<b>FRANKLIN</b>	16 X 52	797	2	1	4
7016-707	<b>LAWRENCE</b>	16 X 66	1012	3	2	5
4424-2508B	<b>OAK ALLEY</b>	24 X 44	1056	2	2	6
3628-236	<b>ADIRONDACK 36</b>	28 X 36	960	2	1	7
3628-236	<b>ADIRONDACK 40</b>	28 X 40	1067	2	2	8
4428-1855	<b>SPRINGFIELD</b>	28 X 44	1173	3	2	9
4428-440	<b>GREENWOOD</b>	28 X 44	1173	3	2	0
4828-1860	<b>TUSCARORA</b>	28 X 48	1280	3	2	11
3628-236	<b>ADIRONDACK 48</b>	28 X 48	1280	3	2	12
4428-1855	<b>SPRINGFIELD XL</b>	28 X 48	1280	3	2	13
5628-68	<b>TRUMAN</b>	28 X 56	1492	3	2	14
5628-1965	<b>LEHIGH</b>	28 X 56	1492	3	2	15
6028-942	<b>MIFFLIN</b>	28 X 60	1600	3	2	16
5628-1965	<b>LEHIGH XL</b>	28 X 64	1706	3	2	17

**ROTHROCK 40** 4414-40 | 533 SQ. FT. | 14X40 | 1 BED 1 BATH



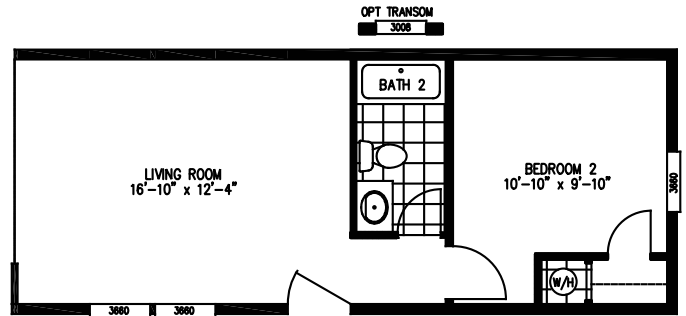
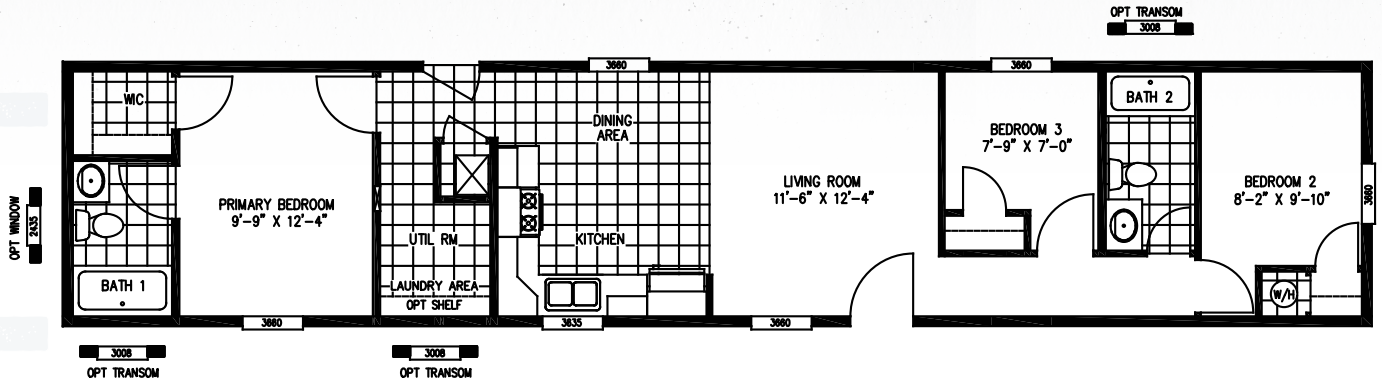
FRONT KITCHEN OPTION

**ROTHROCK 48** 4414-40 | 640 SQ. FT. | 14X48 | 2 BED 1 BATH



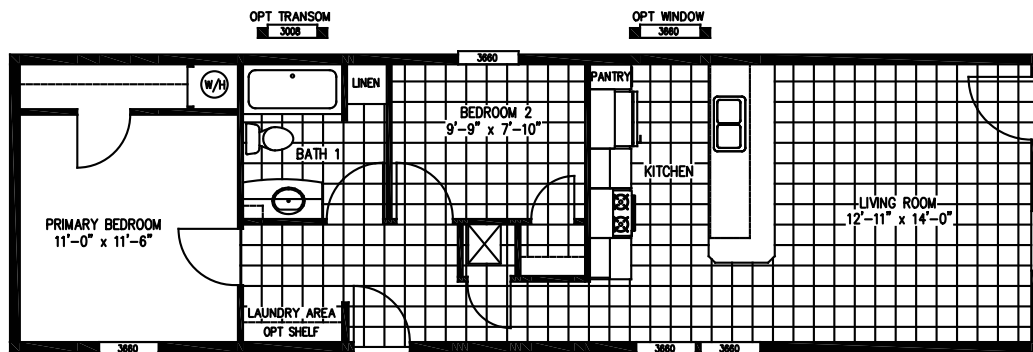
HALF BATH OPTION

# ALLEGHENY 7014-660 | 880 SQ. FT. | 14X66 | 3 BED 2 BATH

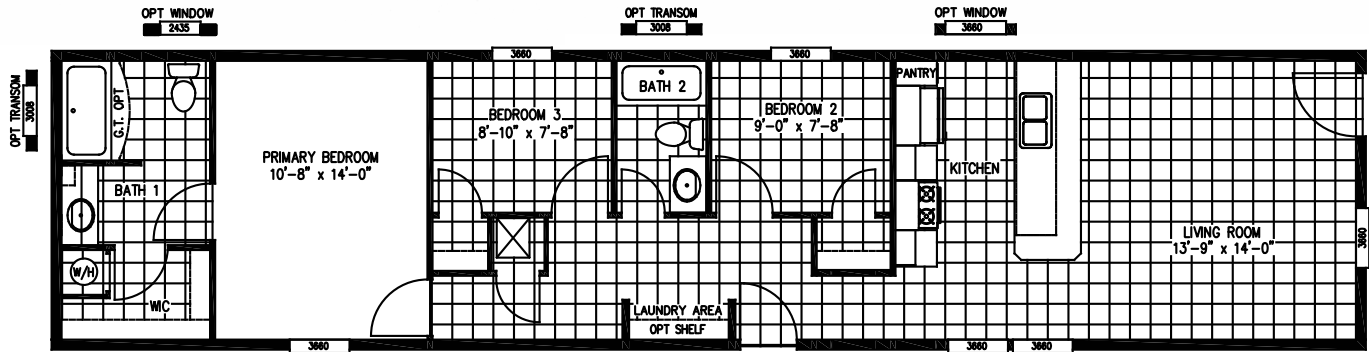


TWO BEDROOM OPTION  
(REPLACES BEDROOM 3)

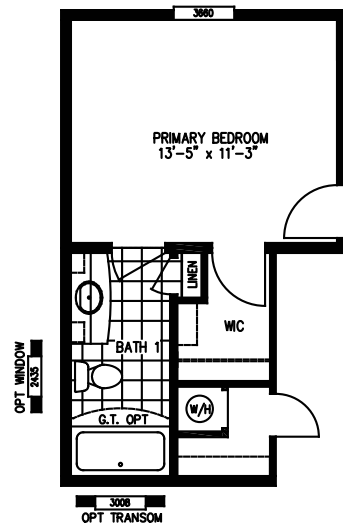
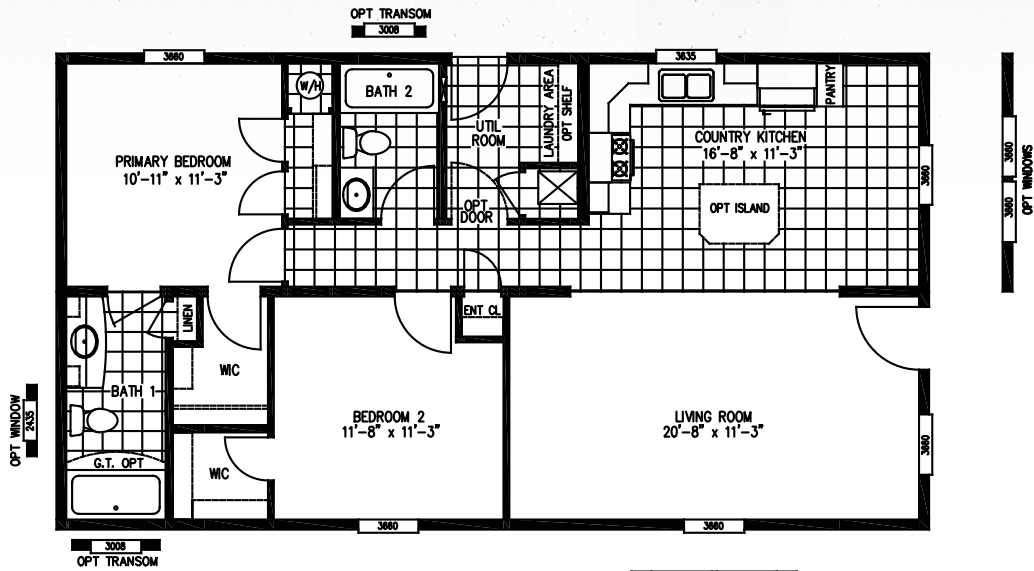
# FRANKLIN 5616-706 | 797 SQ. FT. | 16X52 | 2 BED 1 BATH



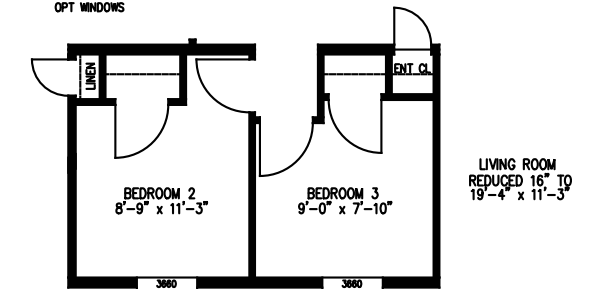
**LAWRENCE** 7016-707 | 1012 SQ. FT. | 16X66 | 3 BED 2 BATH



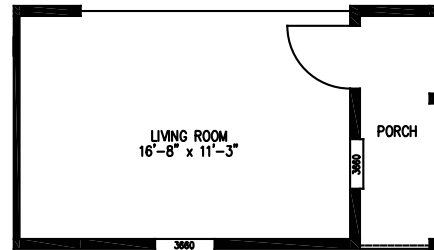
**OAK ALLEY** 4424-2508B | 1056 SQ. FT. | 24X44 | 2 BED 2 BATH



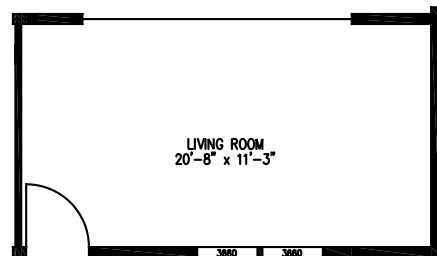
OPTIONAL PRIMARY BEDROOM LAYOUT



3 BEDROOM OPTION



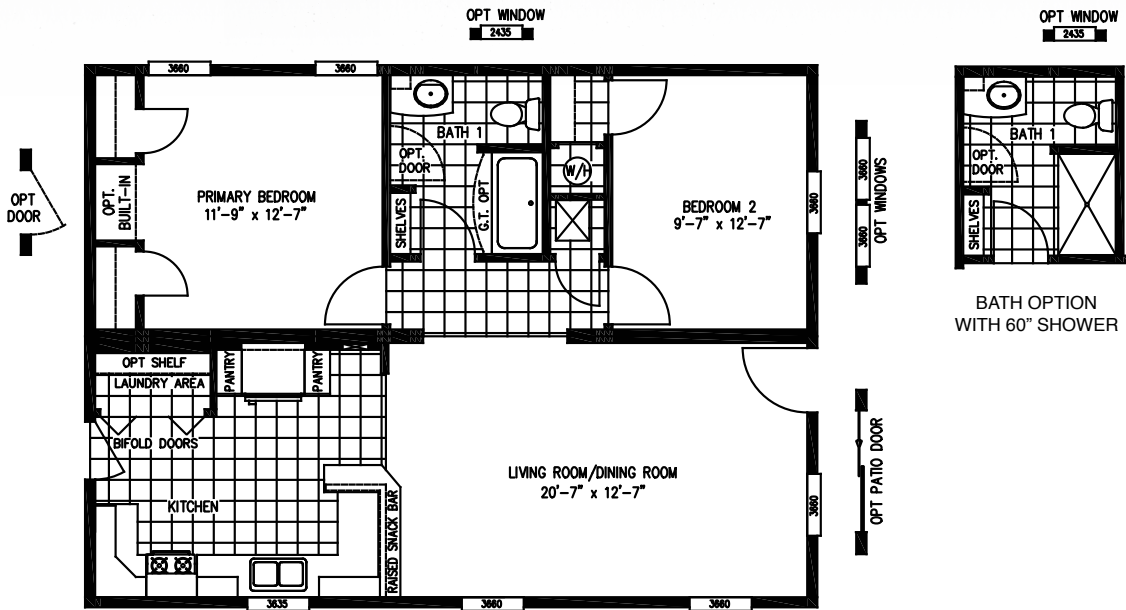
4' FRONT PORCH OPTION



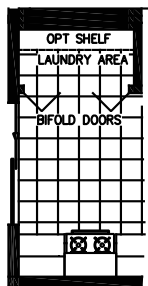
SIDE ENTRY OPTION



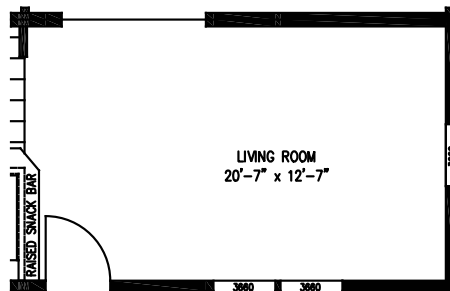
**ADIRONDACK 36** 3628-236 | 960 SQ. FT. | 28X36 | 2 BED 1 BATH



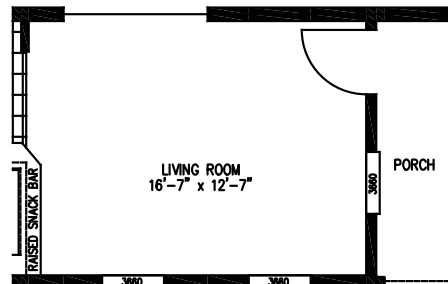
BATH OPTION WITH 60" SHOWER



PATIO DOOR OPTION IN KITCHEN



SIDE ENTRY OPTION



4' FRONT PORCH OPTION



PENNSYLVANIA

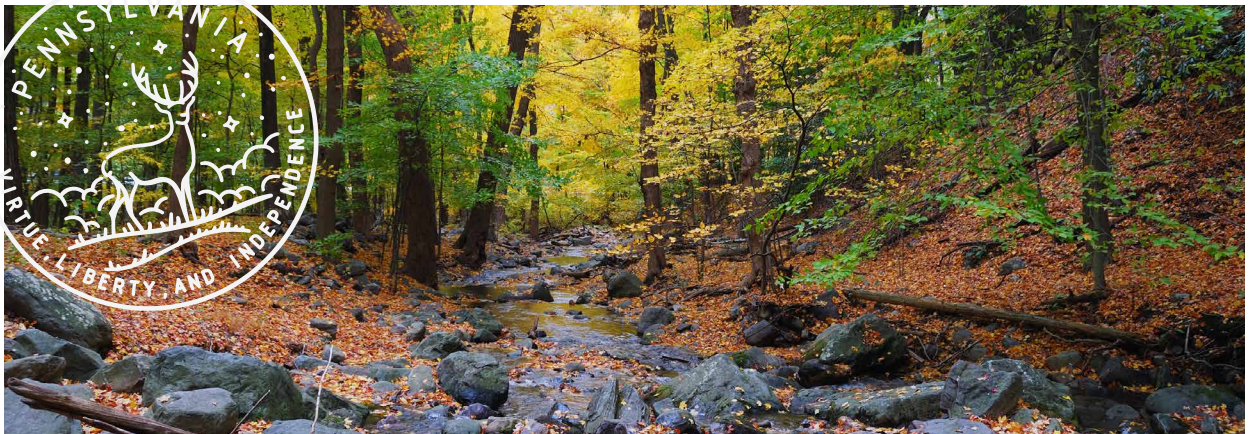
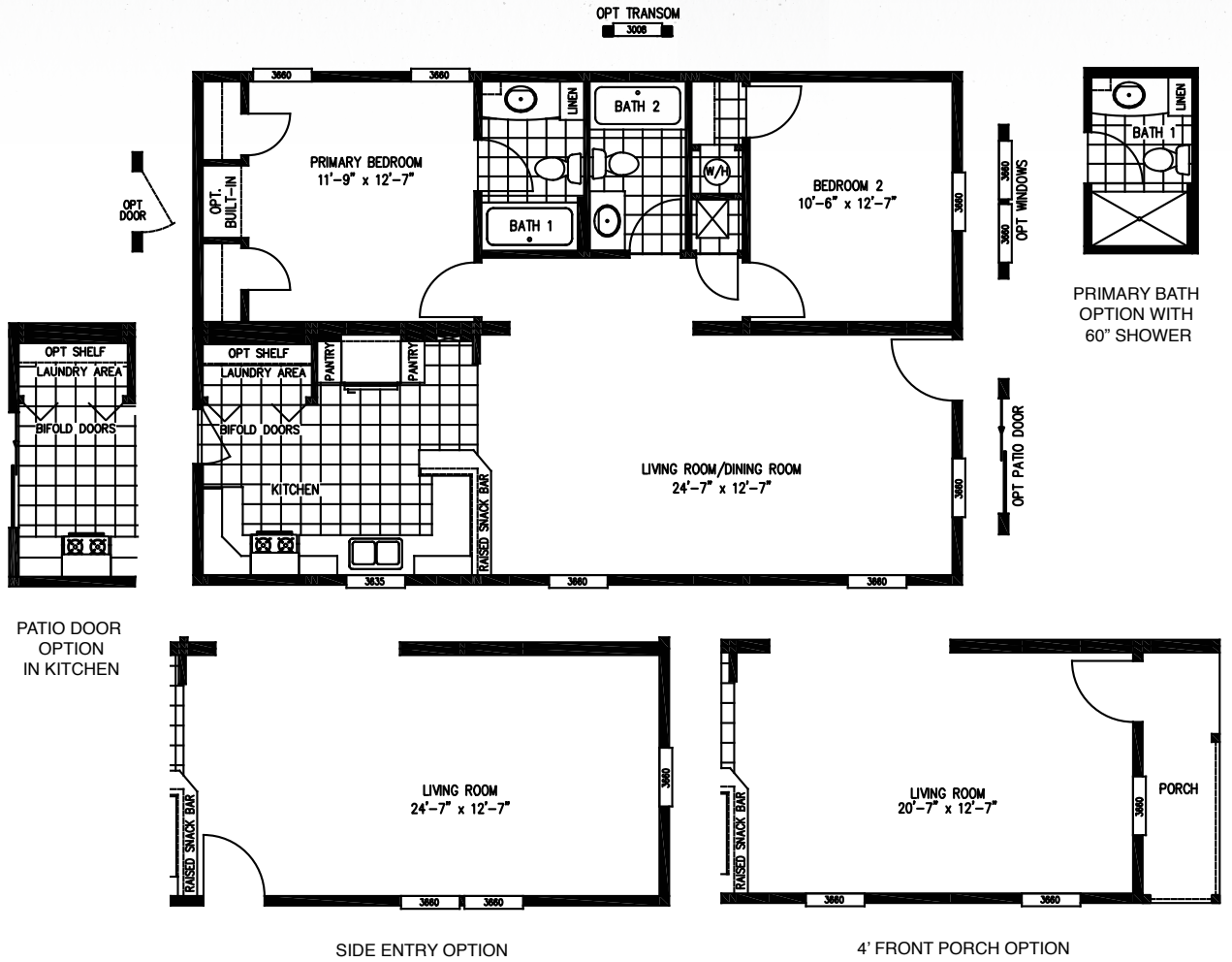
# ADIRONDACK 40

3628-236

| 1067 SQ. FT.

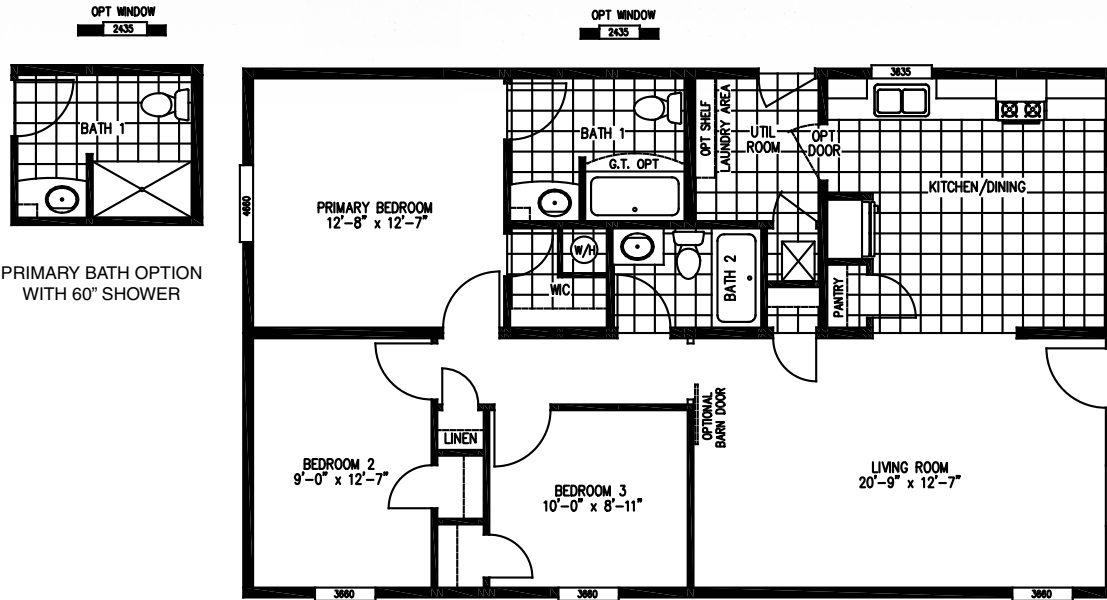
| 28X40

| 2 BED 2 BATH

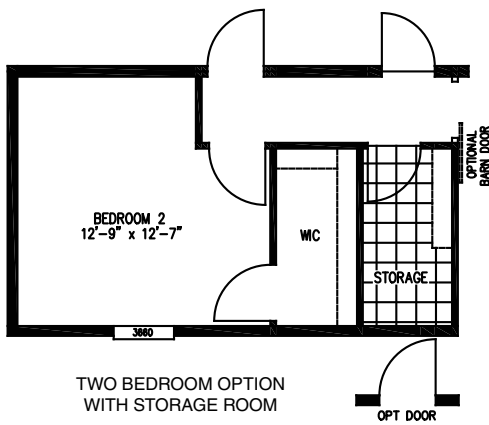




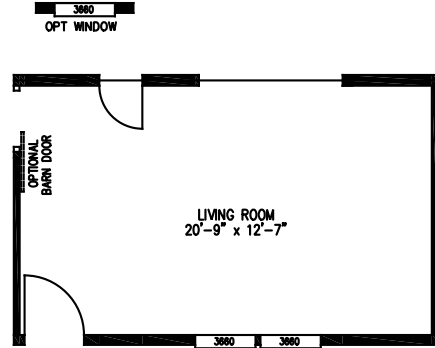
**SPRINGFIELD** 4428-1855 | 1173 SQ. FT. | 28X44 | 3 BED 2 BATH



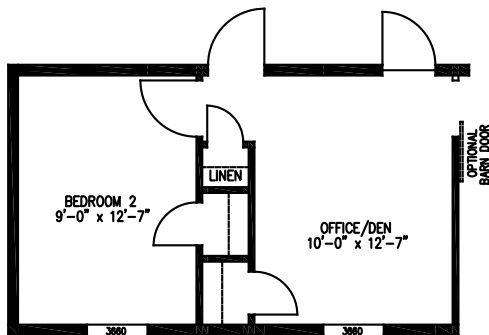
PRIMARY BATH OPTION  
WITH 60" SHOWER



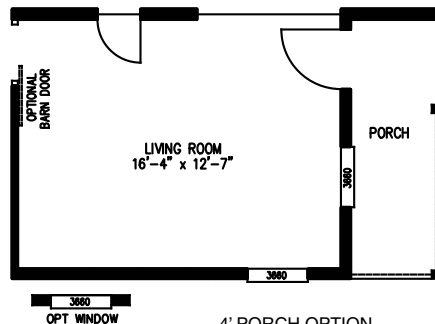
TWO BEDROOM OPTION  
WITH STORAGE ROOM



SIDE ENTRY OPTION



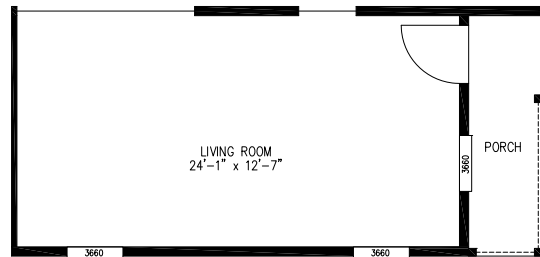
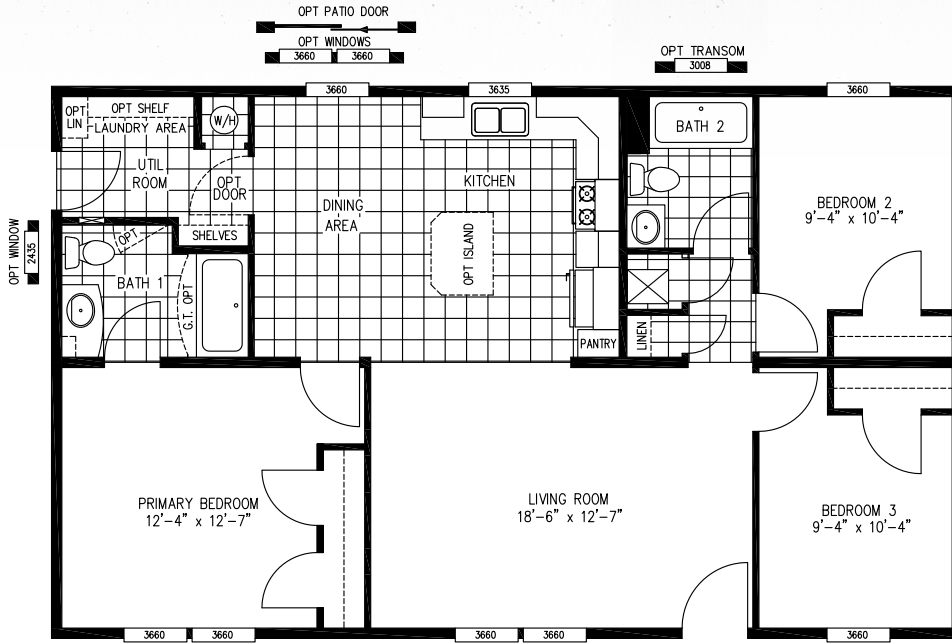
TWO BEDROOM OPTION  
WITH OFFICE OR DEN



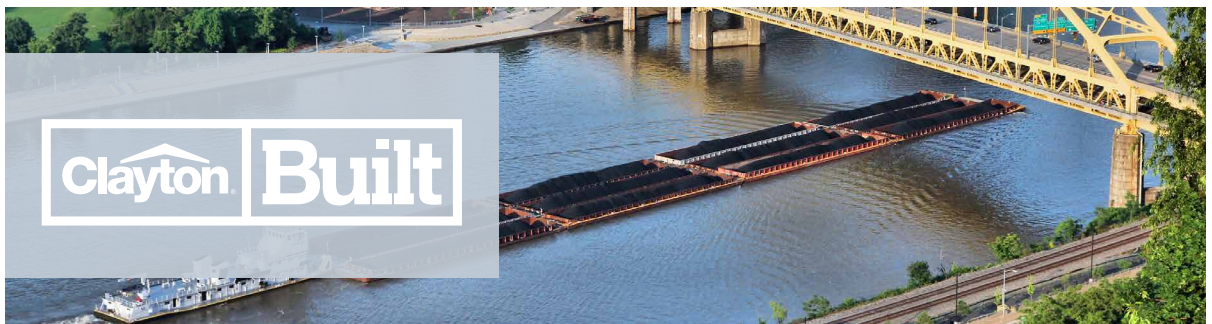
4' PORCH OPTION

PENNSYLVANIA  
LEWISTOWN

**GREENWOOD** 4428-440 | 1173 SQ. FT. | 28X44 | 3 BED 2 BATH

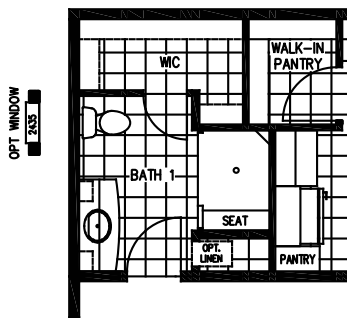
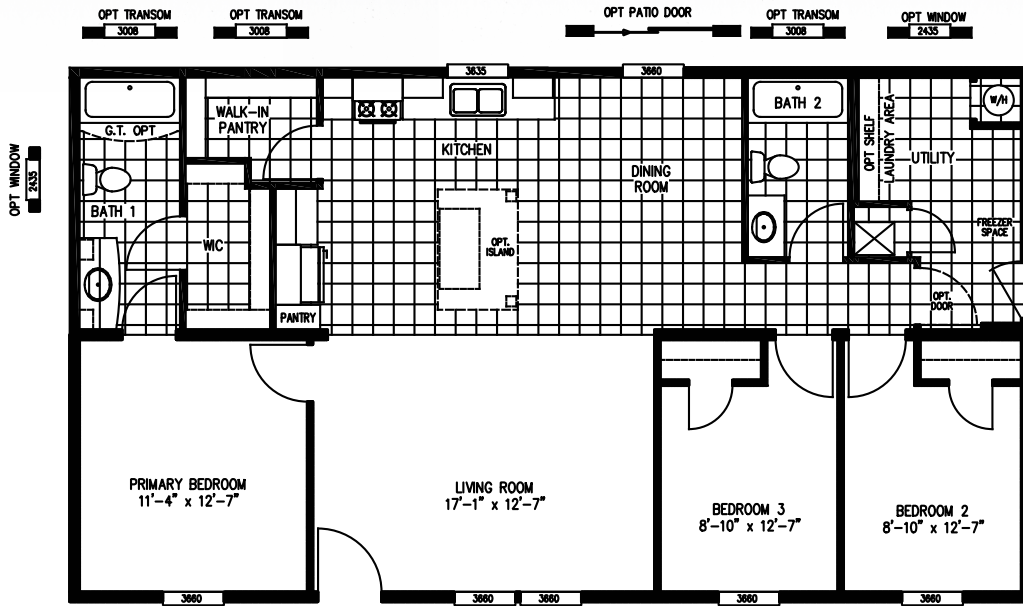


4' FRONT PORCH OPTION  
(2 BEDROOM OPTION)

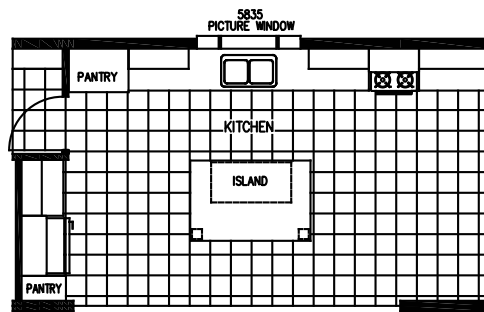


MARLETT

**TUSCARORA** 4828-1860 | 1280 SQ. FT. | 28X48 | 3 BED 2 BATH



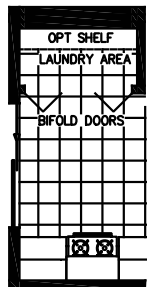
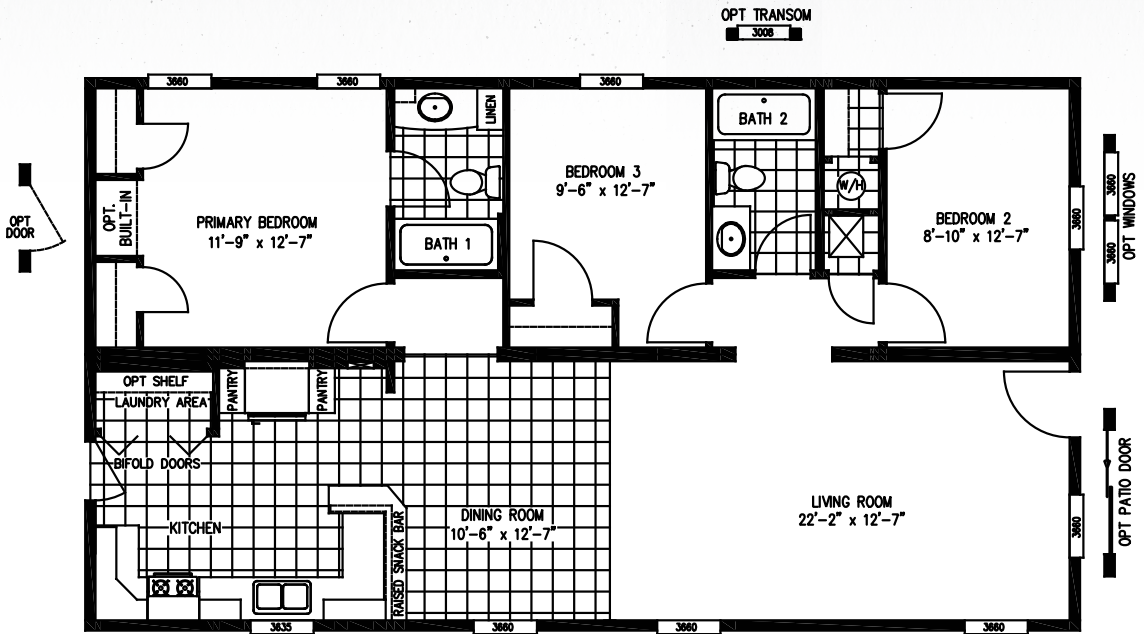
PRIMARY BATH  
OPTION WITH  
60X43 SEAT SHOWER



DELUXE AUGUSTA KITCHEN OPTION WITH  
'AUGUSTA' ISLAND AND PICTURE WINDOW

PENNSYLVANIA  
LEWISTOWN

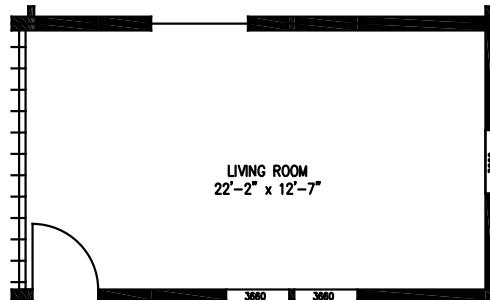
# ADIRONDACK 48 3628-236 | 1280 SQ. FT. | 28X48 | 3 BED 2 BATH



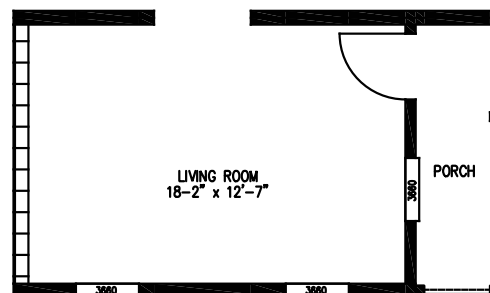
PATIO DOOR OPTION IN KITCHEN



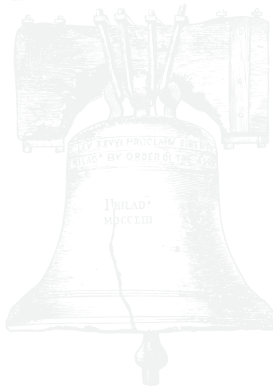
PRIMARY BATH OPTION WITH 60" SHOWER



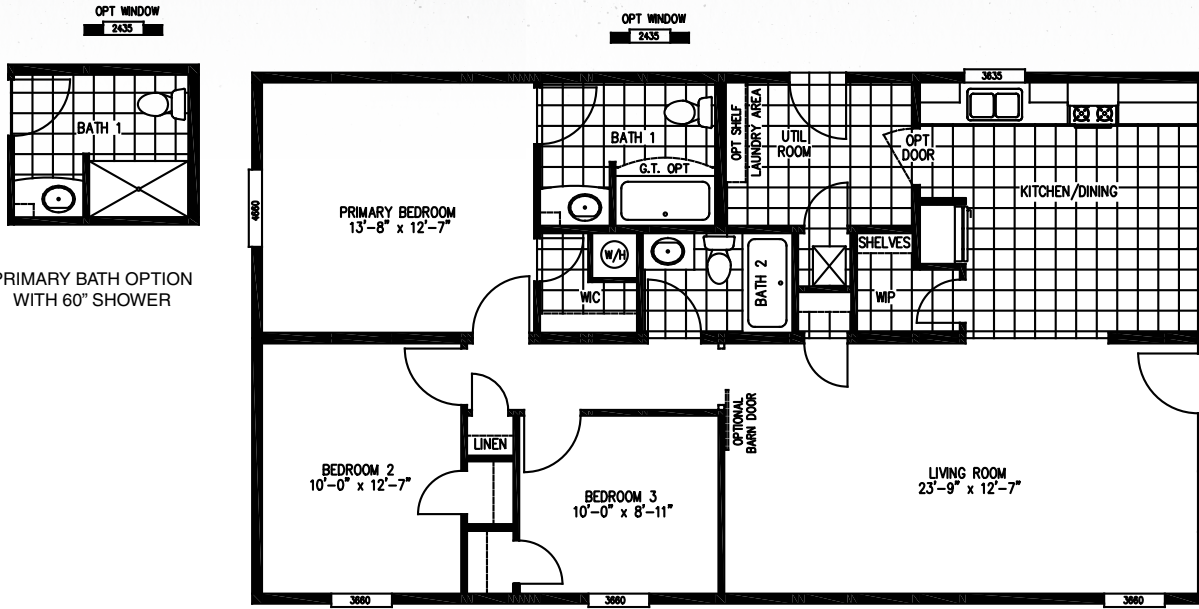
SIDE ENTRY OPTION



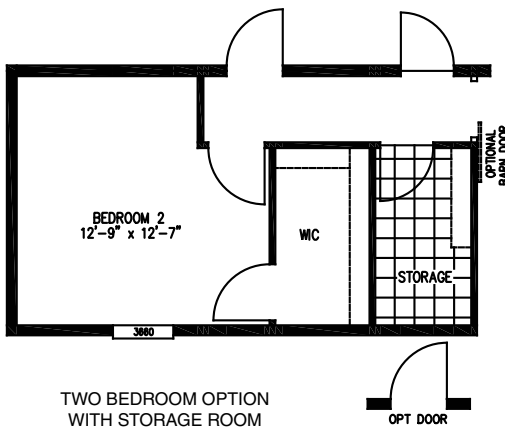
4' FRONT PORCH OPTION



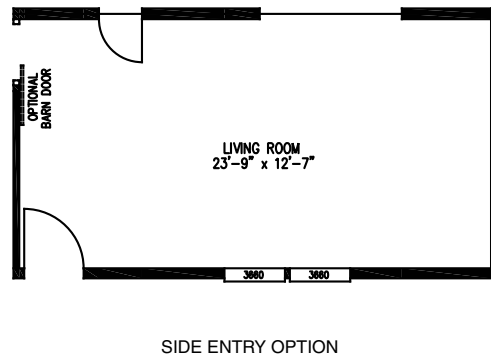
**SPRINGFIELD XL** 4428-1855 | 1280 SQ. FT. | 28X48 | 3 BED 2 BATH



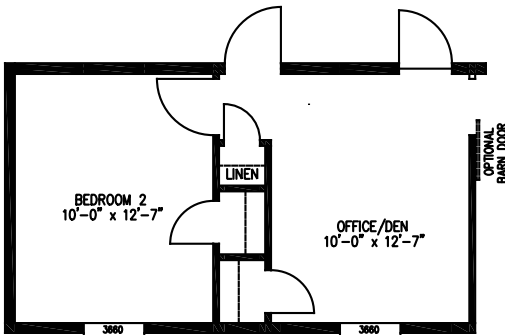
PRIMARY BATH OPTION WITH 60" SHOWER



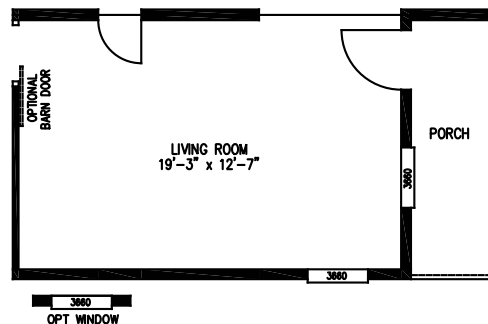
TWO BEDROOM OPTION WITH STORAGE ROOM



SIDE ENTRY OPTION



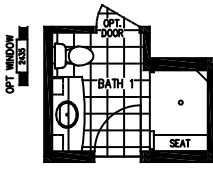
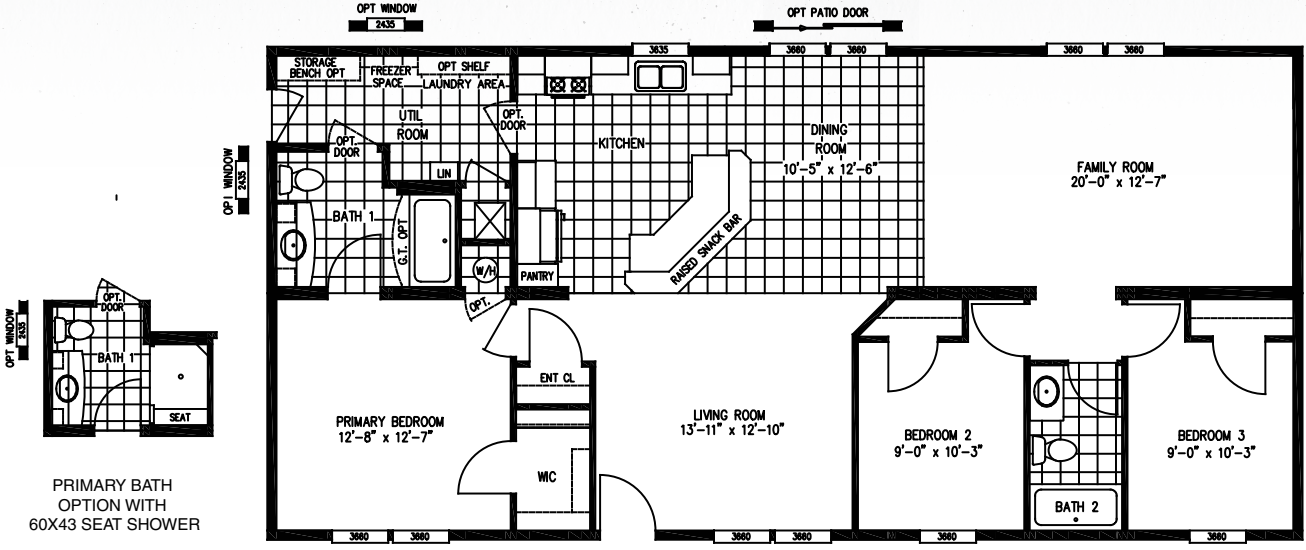
TWO BEDROOM OPTION WITH OFFICE OR DEN



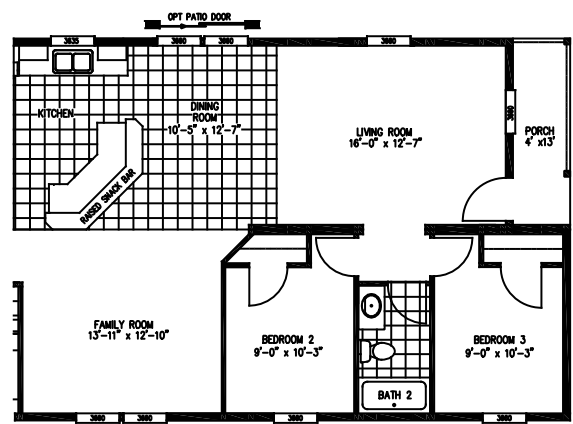
4' PORCH OPTION

PENNSYLVANIA

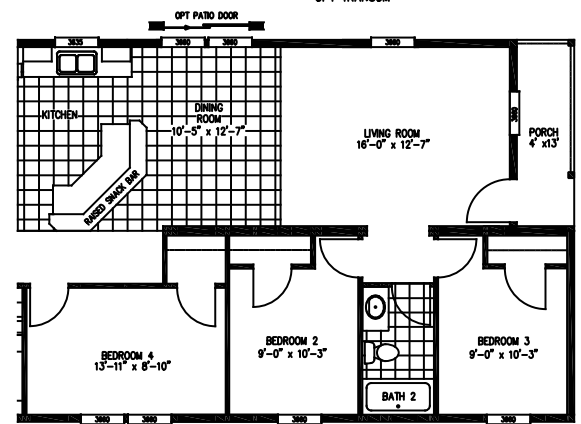
# TRUMAN 5628-68 | 1492 SQ. FT. | 28X56 | 3 BED 2 BATH



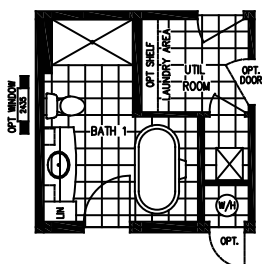
PRIMARY BATH OPTION WITH 60X43 SEAT SHOWER



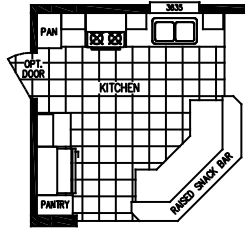
END ENTRY OPTION



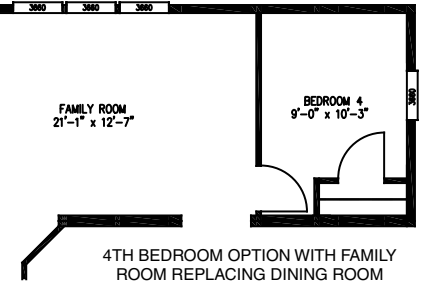
4TH BEDROOM OPTION WITH END ENTRY



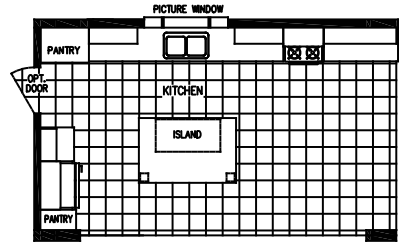
DELUXE BATH OPTION WITH PEDESTAL TUB AND 60" SHOWER



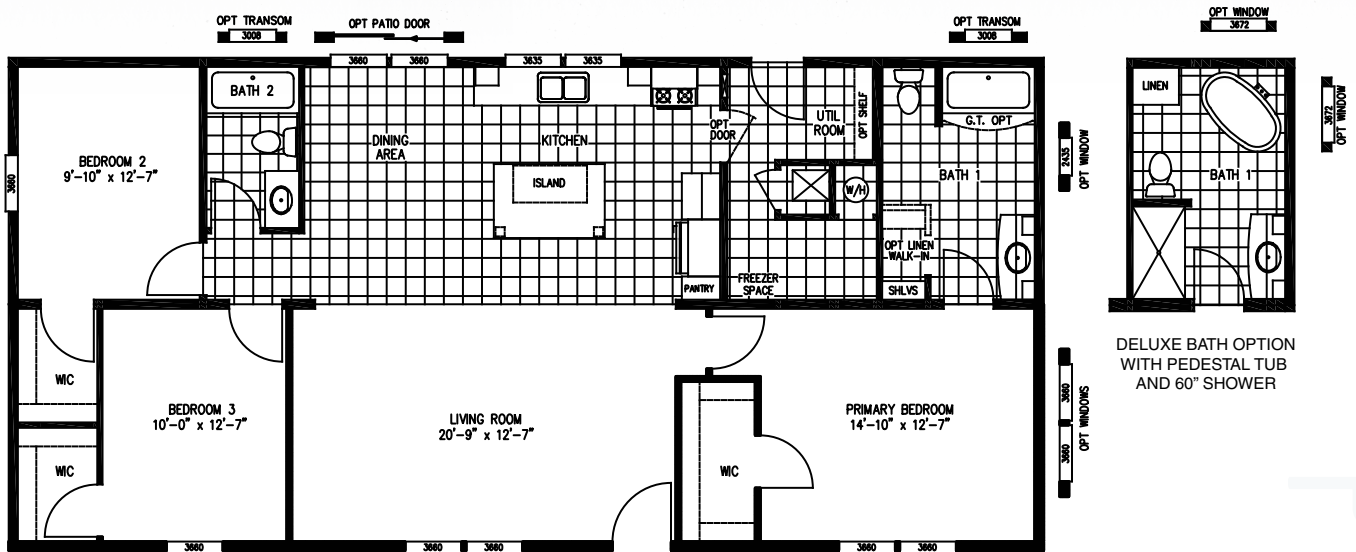
DELUXE AUGUSTA KITCHEN OPTION WITH 'AUGUSTA' ISLAND AND PICTURE WINDOW



4TH BEDROOM OPTION WITH FAMILY ROOM REPLACING DINING ROOM

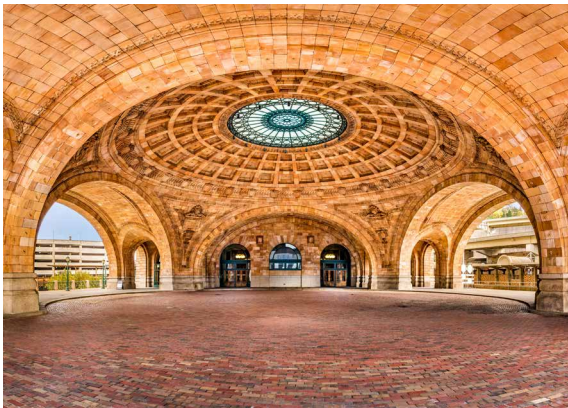
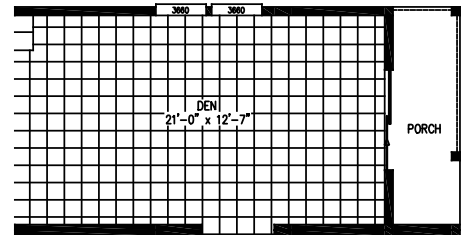
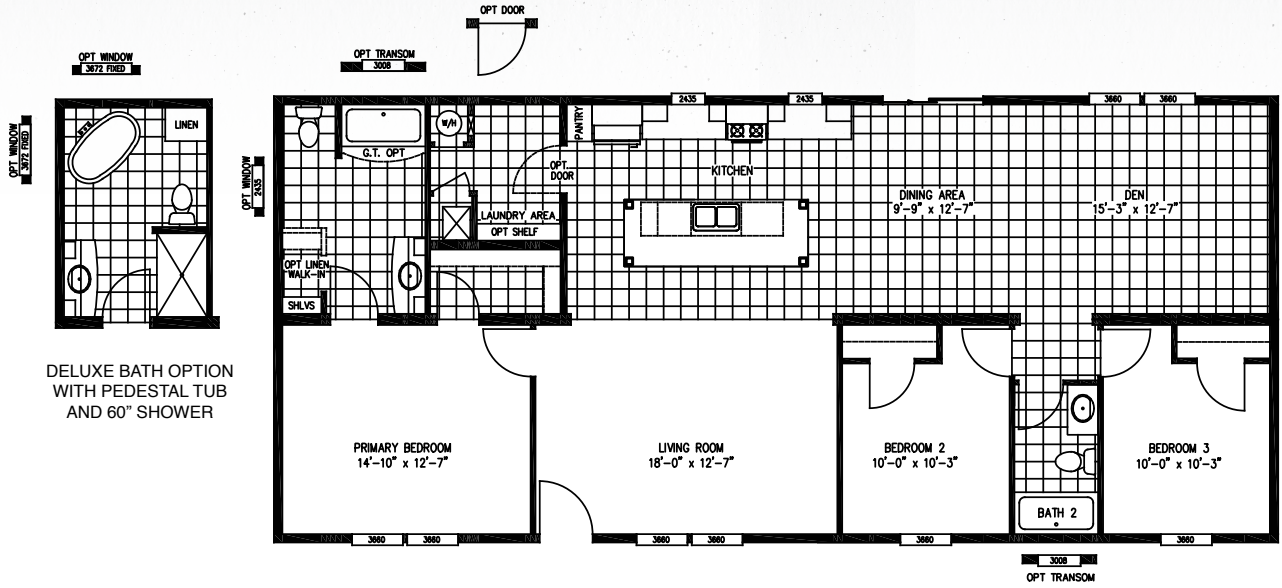


**LEHIGH** 5628-1965 | 1492 SQ. FT. | 28X56 | 3 BED 2 BATH



PENNSYLVANIA  
LEWISTOWN

**MIFFLIN** 6028-942 | 1600 SQ. FT. | 28X60 | 3 BED 2 BATH

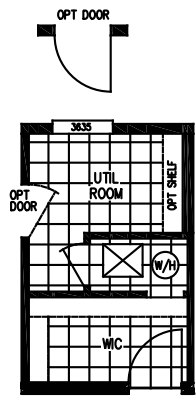
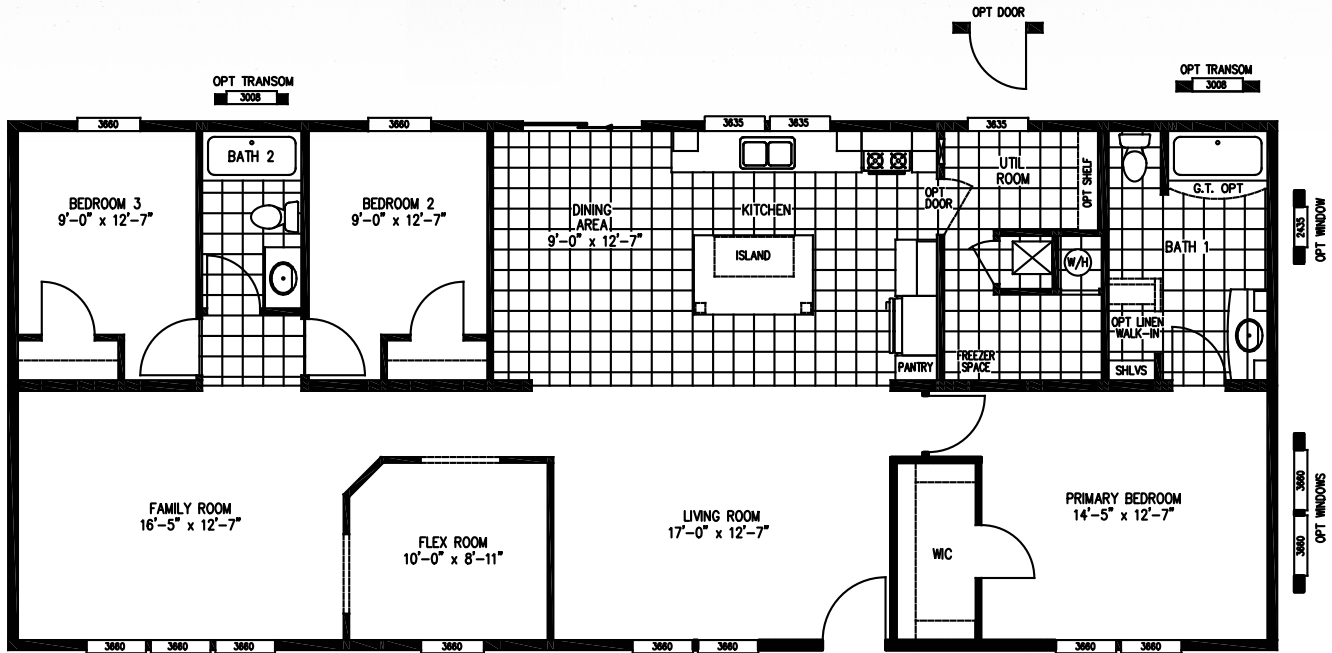


4' FRONT PORCH OPTION (PATIO DOOR MOVES FROM DINING AREA)

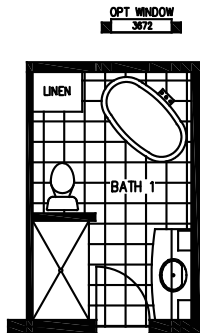




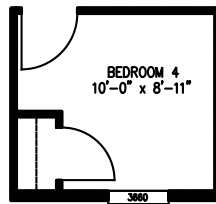
**LEHIGH XL** 5628-1965 | 1706 SQ. FT. | 28X64 | 3 BED 2 BATH



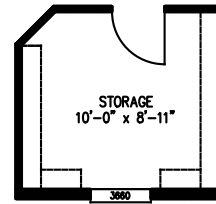
OPTIONAL 2ND WALK-IN CLOSET IN PRIMARY BEDROOM



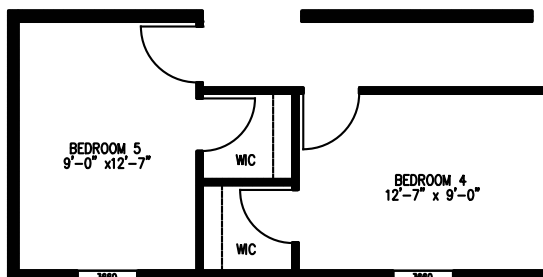
DELUXE BATH OPTION WITH PEDESTAL TUB AND 60" SHOWER



4 BEDROOM OPTION (REPLACES OFFICE/FLEX SPACE)



STORAGE ROOM OPTION (REPLACES OFFICE/FLEX SPACE)



5 BEDROOM OPTION (REPLACES FAMILY ROOM & OFFICE/FLEX)

PENNSYLVANIA  
LEWISTOWN

## SINGLE SECTION

- Drywall Ceilings t/o with Stipple texture finish
- 8' Sidewall with Flat Ceilings
- Colonial Profile Ceiling Cove Trim
- Colonial Profile Door/Win. Casing
- Accent Kit./Din. Cabinet Wall
- Accent – Primary bath Vanity Wall
- Neutral Wall Panels – balance
- Cornice Board & Side Panels – LR & DR Windows
- Floor vinyl - Kit, Utility, Baths and per print
- 25 Oz Shaw Carpet with Pad other areas
- Tackstrip Carpet Installation
- Rebond Carpet Pad
- 2-P Arch-top White Int Doors
- Duracraft Cabinets & Doors t/o
- Bank of Drawers in Kitchen
- 30" Kit OH Cabs with crown
- Hidden Cabinet Door Hinges
- Round BSN Cabinet Pulls t/o
- Sq. Edge Laminate Ctps. t/o
- Lam Bksplash Kit&Bath ctps
- Cabinet Over Range Hood
- Adjustable Shelf in Base Cabinet
- Adjustable shelf in Overhead Cabs
- SS Double Bowl Kitchen Sink
- LED Can Lights throughout
- Pfister Kitchen Faucet
- Frigidaire Appliances
- 18 CU. FT. FF Refer w/ice tray
- 30" Electric Range
- 30" Range Hood w/Light
- 40 Gal. Elec. W/H with pan
- Carrier Electric Forced-Air Furnace
- Ventilair Air Exchange
- Ecobee Smart Thermostat
- Fiberglass Tubs/Showers
- Furniture Style Vanities
- Acrylic Vanity Bowl with Stop
- Vanity Mirror over Sink Bowl
- Pfister Dual Cntrl Vanity Faucet
- Temp. Bal. Tub/Shwr control
- 1.6 Gal Round Bowl Stool
- Power Bath Vent Fan
- LED Can Light over bath vanity
- Vanity Tower most Primary baths
- Switched Recep. (one) in LR
- LED Can light in each bedroom
- Wire Vented Shelf in Closets
- Smoke Detector in each BR
- Plumb for Washer
- Wire and Vent for Dryer
- PEX Water Supply Lines
- PVC Drain and Vent Lines
- Shut-off valves at risers
- Whole House Shut-off
- Exterior G.F.I. Receptacle
- 200 Amp Electrical Service
- Toggle Light Switches t/o
- In-Line Aluminum Heat Ducts
- R-25 Ceiling Insulation
- R-11 Floor Insulation
- R-22 Exterior Wall Insulation
- 2 x 6 Exterior Walls @ 16"OC
- 7/16" O.S.B. Exterior Sheathing w/ housewrap
- 2 x 6 Floor Joists @ 16" O.C.
- 5/8" O.S.B. Floor Decking
- Roof Trusses @ 24" O.C.
- 20# House and Frame
- 3-Tab Asphalt Shingles
- Shingle-Over Ridge Vent
- Iceguard applied at eaves
- 8" F&R Gable Overhangs
- 6-Panel Fiberglass Residential Front & Rear Doors
- Kwikset Lock Sets w/Smartkey security
- Exterior Light at Each Door
- Deadbolt Lock on F&R Doors
- Vinyl low-E Gridless LUX Windows
- D-4 Vinyl Dutchlap Siding
- Shutters on Hitch End
- Recessed Frame
- Removable Hitch

## MULTI-SECTION

- Drywall Ceilings t/o with Stipple texture finish
- 8' sidewalls with flat ceiling
- Colonial Profile Ceiling Cove Trim
- Colonial Profile Door/Win. Casing
- Finished Painted Drywall throughout (White)
- Cornice Board & Side Panels – LR, DR, & FR Windows
- Floor vinyl - Kit, Utility, Baths and per print
- 25 Oz Shaw Carpet with Pad other areas
- Tackstrip Carpet Installation
- Rebond Carpet Pad
- 2-P Arch-top White Int Doors
- Duracraft Cabinets & Doors t/o
- Bank of Drawers in Kitchen
- 30" Kit OH Cabs with crown
- Hidden Cabinet Door Hinges
- Round BSN Cabinet Pulls t/o
- Adjustable Shelf – Kit OH cabs
- Sq. Edge Laminate Ctps. t/o
- Lam Bksplash Kit&Bath ctps
- Cabinet Over Range Hood
- Adjustable Shelf in Base Cabinet
- Adjustable Shelf in Overhead Cabs
- SS Double Bowl Kitchen Sink
- LED Can Lights throughout
- Pfister Kitchen Faucet
- Frigidaire Appliances
- 18 CU. FT. FF Refer w/ice tray
- 30" Electric Range
- 30" Range Hood w/Light
- 40 Gal. Elec. W/H with pan
- Electric Forced-Air Furnace
- Ventilair Air Exchange
- Ecobee Smart T-stat
- Fiberglass Tubs/showers
- Furniture Style Vanities
- Acrylic Vanity Bowl with Stop
- Vanity Mirror over Sink Bowl
- Pfister Dual Cntrl Vanity Faucet
- Temp. Bal. Tub/Shwr control
- 1.6 Gal Round Bowl Stool
- Power Bath Vent Fan
- LED can light over bath vanity
- Vanity Tower most Primary baths
- Switched Recep. (one) in LR
- LED can light in each bedroom
- Wire Vented Shelf in Closets
- Smoke Detector in each BR
- Plumb for Washer
- Wire and Vent for Dryer
- PEX Water Supply Lines
- PVC Drain and Vent Lines
- Shut-off valves at risers
- Whole House Shut-off
- Exterior G.F.I. Receptacle
- 200 Amp Electrical Service
- Toggle Light Switches t/o
- In-Line Aluminum Heat Ducts
- R-25 Ceiling Insulation
- R-11 Floor Insulation
- R-19 Exterior Wall Insulation
- 2 x 6 Exterior Walls @ 16"OC
- 7/16" O.S.B. Exterior Sheathing w/ housewrap
- 2 x 6 Floor Joists @ 16" O.C.
- 5/8" O.S.B. Floor Decking
- Roof Trusses @ 24" O.C.
- 20# House and Frame
- 3-tab Asphalt Shingles
- Shingle-Over Ridge Vent
- Iceguard applied at eaves
- 8" F&R Gable Overhangs
- 6" F&R Eave Overhangs - 28W
- 10" F&R Eave Ovrhngs – 24W
- Fiberglass 6-Panel Residential Front & Rear Doors
- Kwikset Lock Sets w/Smartkey security
- Exterior Light at Each Door
- Deadbolt Lock on F&R Doors
- Vinyl low-E Gridless LUX Windows
- D-4 Vinyl Dutchlap Siding
- Shutters on Front Doorside
- Recessed Frame
- Removable Hitch



**30 Industrial Park Road | Lewistown, PA 17044 | 1-800-398-0234**

Because our company has a continuous product update process, specifications, floor plan layout and dimensions shown on this literature are subject to change without notice or obligations. Construction and design specifications as well as features presented are conceptual, therefore should not be used as actual construction data, and may not be offered in all series or models. Your Retailer or Sales Rep will provide accurate, up-to-date information on available options and specifications for your home.

REV 01/22